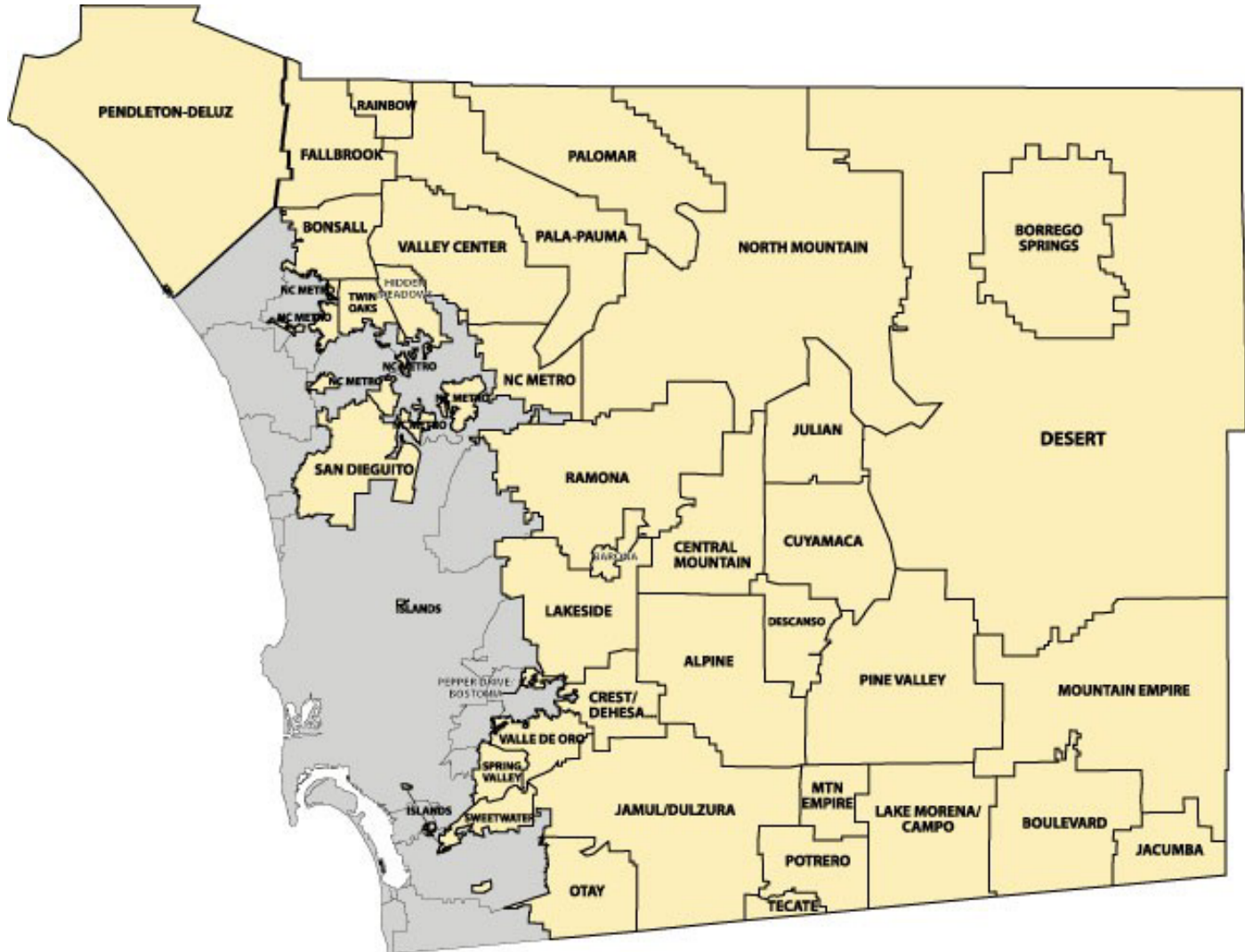




# SAN DIEGO COUNTY COMMUNITY PROTECTION/EVACUATION PLAN TEMPLATE



American Red Cross  
San Diego and Imperial Counties





# Agenda

- Background
- Community Protection/Evacuation  
Plan Template
- Establishment of Community  
Team



# Background

- The Board of Supervisors' directed the County of San Diego, through the Office of Emergency Services (OES), to ensure the creation of community protection and evacuation plans.
- The implementation of these plans would assist Federal, State and County officials to create a closer working relationship within these communities.



# Template

- Contains three sections.
  - Section 1: Basic Plan
  - Section 2: Public Education
  - Section 3: Community Protection Plan
- Template Guidelines.



# SECTION 1

- BASIC PLAN:
  - Preface, Community Protection Plan
  - County Description
  - Current Multi-hazard Environment
  - Mitigation Strategy
  - Disaster Law Enforcement Response
  - Evacuation Actions



# SECTION 1 (Cont'd)

- BASIC PLAN:
  - Local Fire Agencies
  - Glossary



# Multi-hazard Environment

1. Coastal Storm / Coastal Erosion / Tsunami
2. Dam Failure
3. Earthquake
4. Liquefaction
5. Fire (structural and wildfires)
6. Flood
7. Landslide (rain-induced)
8. Man-made Hazards (FOUO)



# Earthquake & Liquefaction Loss

Jurisdiction	Exposed Population	Residential Buildings at Risk					Commercial Buildings at Risk				
		Building Count	Potential Loss from Shaking (x\$1000)	Potential Added Loss from Liquefaction (x\$1000)	Potential Added Loss from Landslide (x\$1000)	Potential Exposure (x\$1000)	Building Count	Potential Loss from Shaking (x\$1000)	Potential Added Loss from Liquefaction (x\$1000)	Potential Added Loss from Landslide (x\$1000)	Potential Exposure (x\$1000)
Carlsbad	77,889	29,070	2,649	0	524	7,907,995	317	998	0	352	1,657,846
Chula Vista	173,491	43,573	3,086	332	586	11,347,235	407	772	50	262	1,629,766
Coronado	24,189	6,734	1,309	156	208	2,975,822	80	224	0	75	292,836
Del Mar	4,389	2,044	235	0	46	597,430	31	110	0	27	147,280
El Cajon	94,531	18,124	1,739	0	319	5,818,497	299	726	0	218	1,259,050
Encinitas	58,015	21,678	1,962	0	536	5,652,852	207	659	0	209	1,005,468
Escondido	133,666	31,374	2,743	0	399	8,310,439	409	1,149	0	339	1,891,392
Imperial Beach	26,849	5,185	680	149	94	1,606,094	36	87	8	34	123,364
La Mesa	53,856	14,205	1,026	0	121	4,309,581	158	318	0	82	735,906
Lemon Grove	26,114	7,224	454	0	56	1,783,371	50	95	0	32	223,048
National City	54,081	8,776	874	56	203	2,933,551	157	420	0	132	708,696
Oceanside	160,421	45,696	4,336	646	1,156	11,476,291	274	849	34	293	1,244,742
Poway	48,054	15,684	776	0	141	4,105,140	153	257	0	82	733,510
San Diego (City)	1,223,503	309,774	32,046	1,648	8,721	95,131,220	4,326	12,428	725	4,231	19,740,288
San Marcos	55,013	15,191	934	0	113	3,356,696	239	518	0	153	907,530
Santee	52,439	16,362	1,076	0	279	3,684,154	123	252	0	108	460,806
Solana Beach	12,766	5,171	573	62	108	1,531,192	100	312	15	84	438,930
Unincorp - Rural	33,749	14,187	886	0	152	3,675,859	107	149	0	43	423,636
Unincorp - Urban Core	410,798	126,360	8,963	1	2,113	31,446,688	639	1,123	0	329	2,762,220
Vista	89,926	20,725	1,597	0	251	5,517,933	210	411	0	116	911,012
<b>TOTAL</b>	<b>2,813,739</b>	<b>757,137</b>	<b>\$67,943</b>	<b>\$3,050</b>	<b>\$16,126</b>	<b>\$213,168,040</b>	<b>8,322</b>	<b>\$21,860</b>	<b>\$832</b>	<b>\$7,202</b>	<b>\$37,297,326</b>





# Section 2 – Public Education

- A. Fire Safe Landscaping
- B. Homeowners Checklist
- C. Evacuation Checklist
- D. Wildfire, Why talk about it!
- E. Family Disaster Plan
- F. Vegetation Management
- G. Signs for homes evacuated
- H. Your Livestock and Pets
- I. What is Pre-Fire Management
- J. Animal Control
- K. Terrorism



# EMERGENCY SUPPLIES



**Work - Home - School & Car**



# PROVISIONS FOR PETS





# Section 3 – Community Plan

- A. Community Overview
- B. History of region
- C. Community stakeholders list
- D. Mitigation Strategy
- E. Vegetation Management Plan
- F. Community Protection and Evacuation Plan
- G. Fire Agencies Response Plan
- H. Law Enforcement Response Plan
- I. Communications
- J. Animal Services Response Plan.
- K. Mass Casualty & medical Response Plan
- L. Shelter and emergency services Response Plan
- M. Important phone numbers
- N. Fire Protection by area
- O. Water Systems
- P. Access Standards
- Q. Logistics





# County's Role

- **Activation of County EOC's**
- **Survey of Essential/Critical Facilities**
- **Damage Assessment**
- **Restoration of Essential Services**



# Fire's Roles

- Local Fire Agencies
  - Provides information of fire behavior and predicted path
  - Advises Law Enforcement when/where evacuations are required



# Law Enforcement's Roles

- Sheriff's Deputies
  - Responsible for evacuations
  - Establish evacuation routes
  - May identify Temporary Evacuation Points
  - Establish Traffic Control
  - Assistance to Special Populations/Facilities
  - Assistance with transportation



# Evacuations



# Evacuations

Traffic backed up on I-15 from closures forced by the wildfires on Sunday





# Community Roles

- Preparedness
- Response
- Recovery
- Mitigation



# PREPAREDNESS

- Community Protection/Evacuation Plan
- Public Awareness Programs
- Drills and Exercises
- Training



# RESPONSE

- Community Action Plan Activation
- Community Emergency Response Team (CERT)
- Support to community members
- Information Processing
  - RACES

# Animal Services

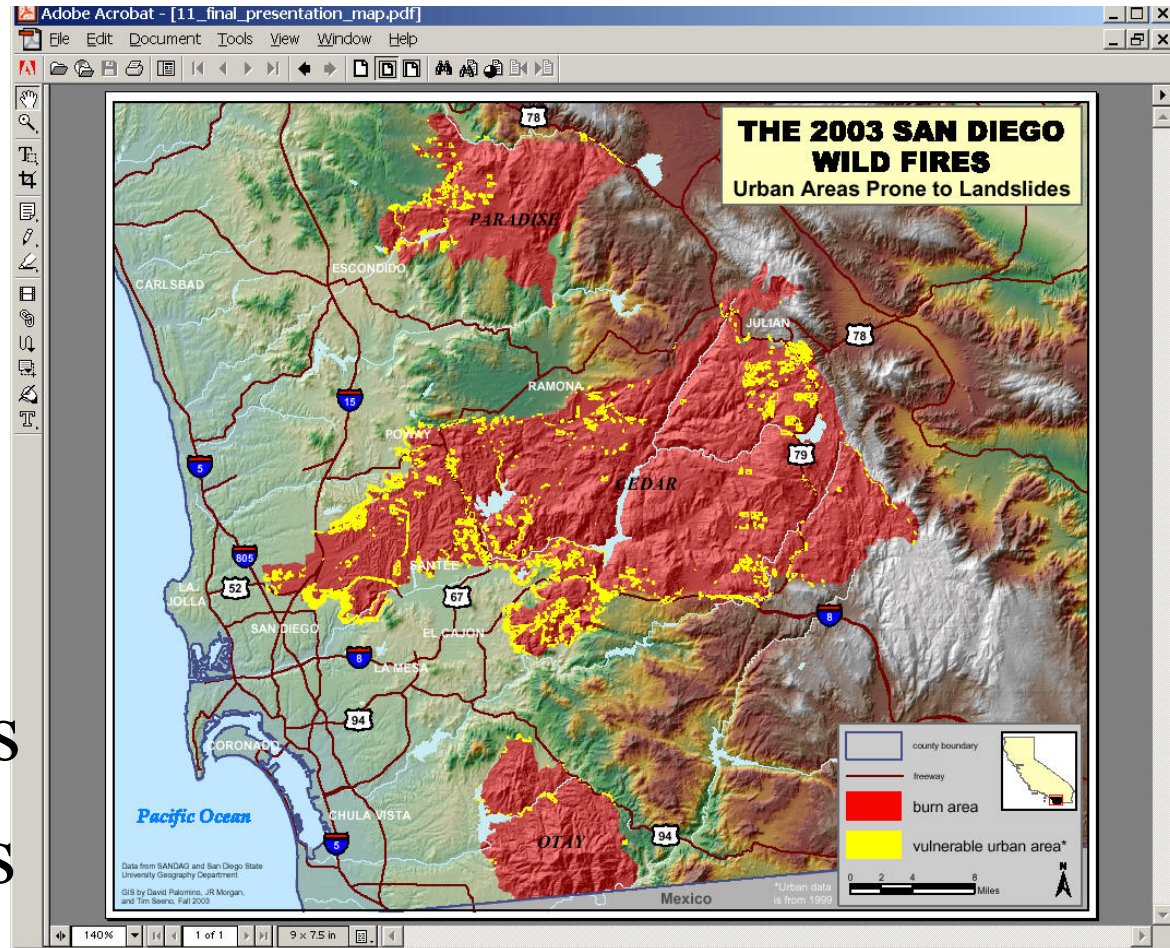


- Evacuation, sheltering and subsequent claiming of large animals
- Identification of trailers



# RECOVERY

- Mutual Aid Assistance
- Community Assessment
- Donations/gifts
- Short Term Issues
- Long Term Issues





# Fire: Structural / Wildfire





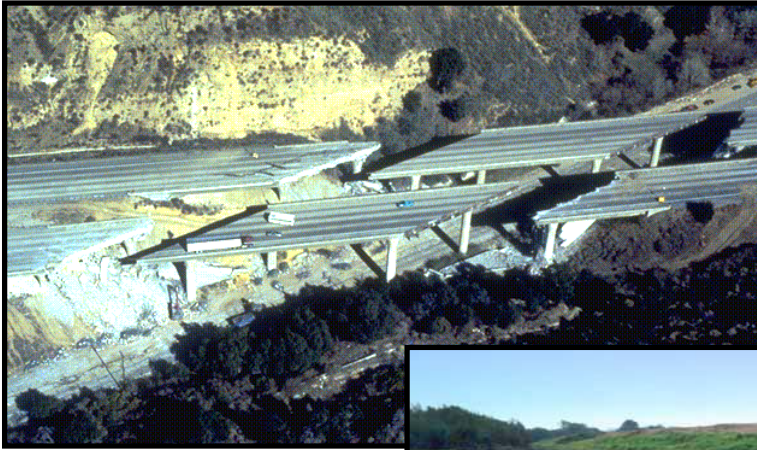


# Flood



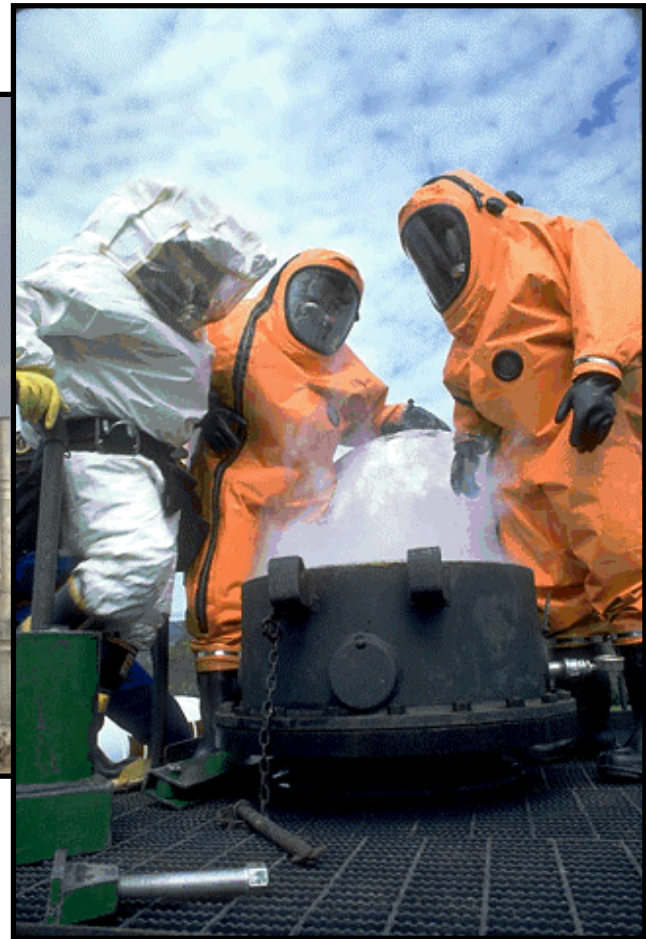


# Earthquake





# Hazardous Materials Release





# MITIGATION

Actions taken to reduce the potential of a disaster or emergency occurring.

- Vegetation Management Plan
- Brush Clearance
- Bracing/bolting/replacing roofs or eaves
- Encouraging residents to follow existing ordinances



# Summary

- Convene Decision makers (Community members)
- Involve Public Safety Agencies
- Engage Interested Parties
- Develop Community Protection/Evacuation Plan
- Provide County OES with final Plan



# Contact Information

San Diego County Office of Emergency Services

5555 Overland Ave, Bldg 19

San Diego, Ca.

(858) 565-3490

POC: Herman Reddick

Email: [herman.reddick@sdcounty.ca.gov](mailto:herman.reddick@sdcounty.ca.gov)